



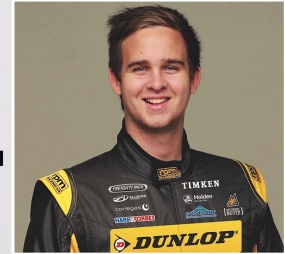
QUICK REFERENCE TRACK MAP

OKAYAMA INTERNATIONAL CIRCUIT-FULL COURSE FORMULA VEE

Laptime: 01:50.104 Weather 79F/26.11C Track 91.99F/41.11C
SEASON-1 2022



By VRS Racing Coach
JAKE BURTON



T4
Approach far left in 4th
BM - after you pass the 50 marker
Brake 75% then taper into a minimum TB
Turn-in as you start braking
DN-SHFT to 3rd - apex at dirt
Full-throttle just before apex
Stay off curb
Exit no wider than left of middle

T3 - Moss 'S'
UP-SHFT to 4th
Clip the green paint over the white line
Straightline with 2 tires on the red/white curb
Cross over to the left

T2
Move right immediately
Turn-in just before end of grass
Lift and maintain 50% throttle
Apex late and hug curb - 2 tires on curb
Full throttle at apex
Exit wide to the edge of the green

T1
Approach far left in 4th gear
BM - 10 meters before marshal's box
Brake 65% briefly then taper sharply to minimum TB
DN-SHFT to 3rd
Control the throttle early to 15% then full at apex
Apex just before end of curb
Clip curb
Exit wide left using all the curbing
Get back on track before the end of the green

S4
UP-SHFT to 4th
Move far left

T5
BM - just passed the 50 marker
Brake 80% briefly then long slow TB to apex
DN-SHFT to 3rd - close curb
Full-throttle after apex as you rotate
Exit wide - clip exit curb
Rotate back to the right immediately

T8/T9
BM - Just past the 50 meter board
Brake 70% then TB
Get on the throttle before the apex
Late apex and clip curb
Exit right of middle and get back left
Turn-in and briefly TB to 20% then minimal
Control throttle before full
Late apex close to end of curb
Full curb
Exit wide with 2 tires on exit curb

T10
Approach far left flat out
Turn-in at marshal's shack
Clip curb with 2 tires
Exit wide with two tires on curb
Get back on track before green ends

T11
Turn-in a car length before the end of the dirt
Lift to 20% and maintain throttle there
Trail brake no more than 25% then minimal TB
Full-throttle before apex
Two tires on curb
Exit wide using all of curb and some green
Up-shift to 4th and stay left

T6
Get far right before dry grass then lift to 15%
Turn-in and minimum TB
Full-throttle just before the beginning of curb
Full curb - exit wide over the green
(left tires on white line)

T7
Turn-in where red/white curbing starts
Lift briefly and 25% TB
Slowly increase throttle
Full-throttle at apex
Full curb - exit wide onto green
Get back to tarmac quickly



For a full tutorial from Jake Burton, go to www.virtualracingschool.com

Disclaimer: Use your own judgment when accelerating, lifting and braking based on vehicle speed.

MAP LEGEND

BM= Braking Marker	Lift= Lift off throttle
CRB= Curb	Ease= Steadily Ease off
EXT= Exit	LFT= Left
UP-SHFT= Up-Shift	TB= Trail Brake